



Find our more : [www.business-display.benq.com](http://www.business-display.benq.com)

Headquarters BenQ Corporation	Asia Pacific BenQ Asia Pacific Corp.	China BenQ (IT) CO., Ltd	North America BenQ America Corp.	Europe BenQ Europe B.V.	Latin and Central America BenQ Latin America Corp.
16 Jihu Road, Neihu, Taipei 114, Taiwan Tel : +886-2-2727-8899 Fax : +886-2-2797-9288	12 Jihu Road, Neihu, Taipei, 114 Taiwan Tel : +886-2-2727-8899 Fax : +886-2-2656-2438	181 Zhuyuan Road, Suzhou New District, Suzhou, China Tel : +86-512- 68078800 Fax : +86-512- 68097010	3200 Park Center Drive, Suite 150, Costa Mesa CA 92626 U.S.A. Tel : +1-714-559-4900 Fax : +1-714-557-0200	Meerenakkerweg 1-17 5652 AR Eindhoven Tel : +31-88-888-9200 Fax : +31-88-888-9299	8200 N.W. 33 Street, Suite 301, West Side Plaza III Miami, FL 33122 U.S.A. Tel : +1-305-421 1200 Fax : +1-305-421 1201

Dealer's Stamp

© 2017 BenQ Corp. Specification may vary by region, please visit your local stores for details. Actual product's features and specifications are subject to change without notice. This material may include corporate names and trademarks of third parties which are the properties of the third parties respectively. Doc: IFP\_RP553K/RP653K/RP654K/RP704K/RP750K/RP860K\_BR\_EN\_Q2 2017



## Inspiring Learning at Your Fingertips

*BenQ Interactive Flat Panels for Today's Interactive Classrooms*

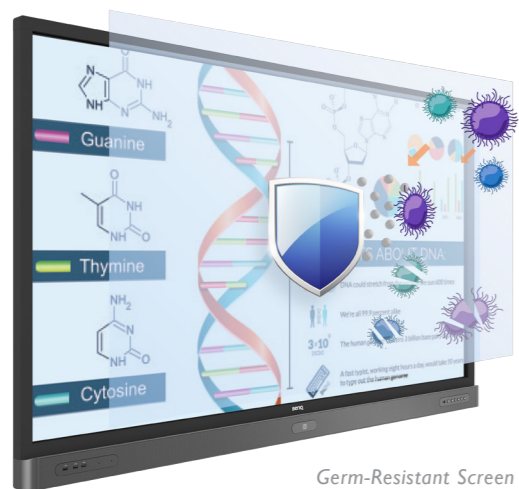


# Inspiring Learning Is at the Heart of Everything We Do

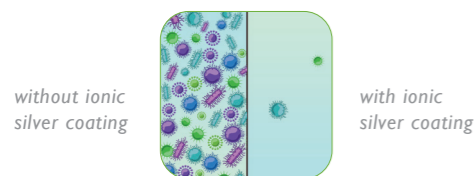
**T**oday's classrooms have evolved into active learning centers, with more and more educators seeing the importance of integrating interactive displays into classrooms to encourage lively discussions. BenQ's RP Series Interactive Flat Panels (IFP) are optimized to have the friendliest user interface and classroom-ready solutions to support schools by bringing a truly interactive and collaborative learning experience into their classrooms.



# Create a Healthy Learning Environment for Students



Germ-Resistant Screen



## Germ-Resistant Screen

The BenQ Interactive Flat Panel is equipped by a Germ-Resistant Screen that makes it ideal for riskless teaching environments. The Germ-Resistant Screen is empowered by a multilayer coating of the non-toxic, enduring nano ionic silver agent which can kill most bacteria and virus on contact by disrupting their cell division mechanism. The non-toxic ionic silver has passed strict food safety tests and mucous-membrane irritation tests to prove that it is both nonirritant and completely harmless to human bodies. Additionally, the ionic silver's antimicrobial feature remains effective even after thorough cleaning or long periods of use.

\*Available in RP654K/ RP704K/ RP750K/ RP860K

### \* SGS Test Confirmed

SGS is the world's leading inspection and verification company, providing internationally approved testing services to verify product quality and performance. Placing our trust in SGS's best-in-class facilities and world-recognized integrity, we had their experts carefully evaluate the screen's antimicrobial efficacy. Proved by the JIS Z 2801:2010 testing methods, the result shows that BenQ's Germ-Resistant Screen can effectively restrain the growth of Escherichia coli and Staphylococcus aureus. To maintain antimicrobial efficacy, please frequently wipe your touch screen with a clean, soft, lint-free cloth moisturized with a neutral detergent.

## Smart Eye-Care Solution

The Smart Eye-Care solution can function intuitively with the help of the embedded motion sensor. For a smooth and comfortable viewing experience, IFPs will automatically activate Flicker-Free and Low Blue Light features by detecting the movement of users close to the screen.

\* For Android devices, BenQ's IFPs will automatically set screen backlight to a comfortable setting instead of switching to the Low Blue Light mode.



### BenQ TÜV-certified Low Blue Light Technology

Minimizes blue light exposure to reduce eye strain and retrain adverse health effects such as macular degeneration or disrupted melatonin secretion.

### BenQ TÜV-certified Flicker-Free Technology

Designed to remove LED backlight flickering and provides a zero-flicker viewing experience.

### BenQ Anti-Glare Display

Effectively reduce reflections, providing students more legible text and clearer images.



### TÜV Rheinland Certified

BenQ eye-care technology has been rigorously tested by world-renowned TÜV Rheinland experts for true effectiveness on eliminating flickering and reducing low blue light emission by our displays.



# Foster Active Learning & Collaborative Interaction

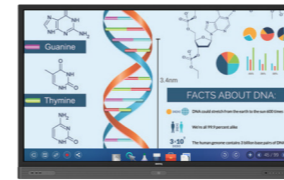
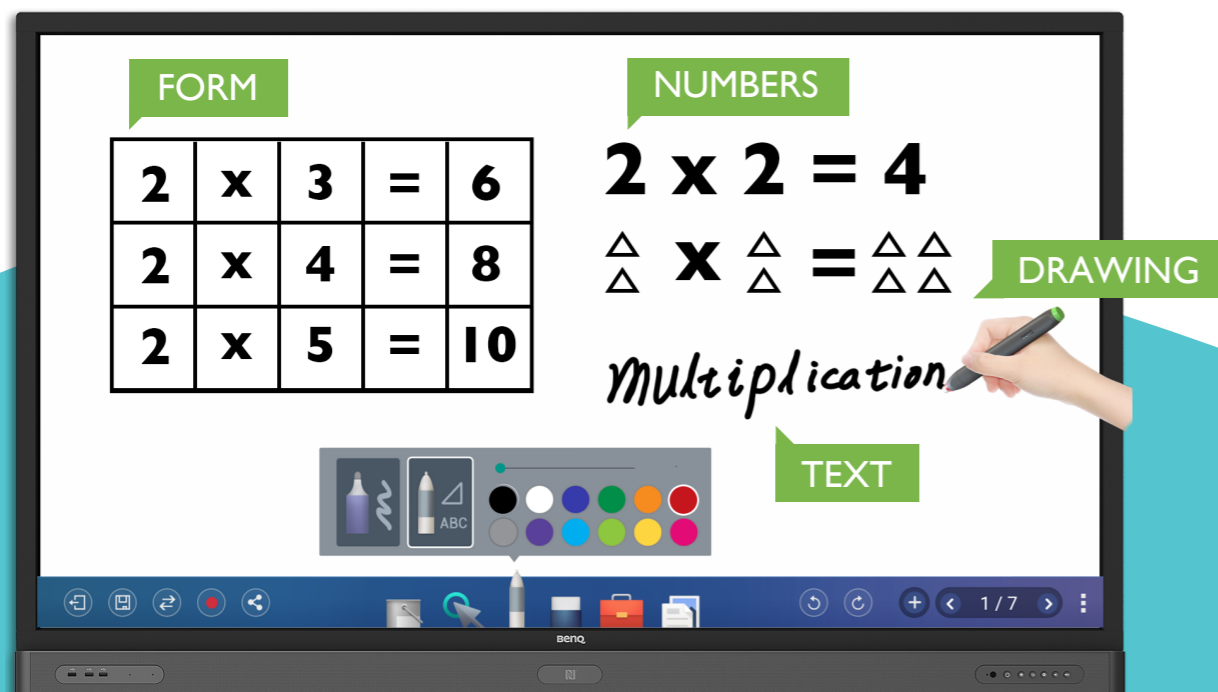
## EZWrite 4.0

EZWrite 4.0, pre-installed exclusively on BenQ's IFPs, is the ultimate annotation app that is designed to facilitate interactive learning with a tap. EZWrite 4.0 instantly turns the Interactive Flat Panel into a full-size whiteboard for illustrating ideas, recording notes, brainstorming, and more. More than just taking notes, EZWrite 4.0 also comes with all sorts of tools that can encourage cooperation and participation. It's accessible and easy to use for both teachers and students.

\*Available in RP654K/ RP704K/ RP750K/ RP860K

## Intelligent Handwriting Recognition

The RP Series' handwriting recognition feature allows presenters to simultaneously convert written text, numbers, forms, and drawings into legible materials without having to switch modes while effectively facilitating smooth teaching flow.



## MS Office Compatibility

EZWrite 4.0 is compatible with Adobe PDF and other MS Office software, which can make class preparation and loading teaching material more efficient.



## Data-to-Go

Save annotations as .pdf or .png files and share them as review materials through e-mails, QR code, USB drive or IFP's internal memory. You can also print them out from any printer on the same network, diversifying your data sharing options.



## Video Recording

BenQ RP Series comes with the video recording feature that allows teachers to record lectures for class preparation or review purposes.


\*Available in 2017 Q3

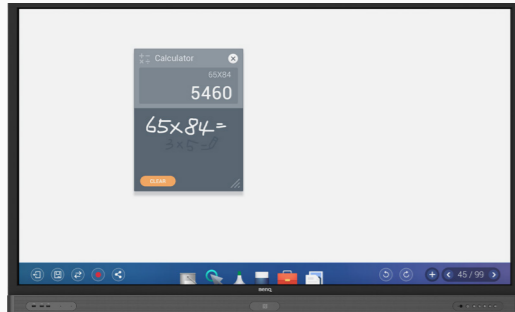


## Floating Toolbar

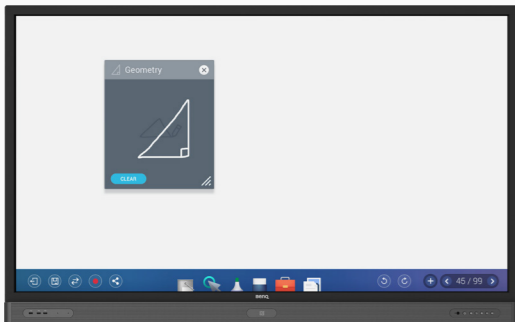
EZWrite 4.0's floating toolbar is compatible with any input source and Android™ applications. The floating on-screen menu lets you immediately access a range of functions, including recording, print screen, screen capture, eraser, pen and whiteboard. Users can change pen colors, take screenshots and accomplish so much more to enhance class interaction whenever you need it.



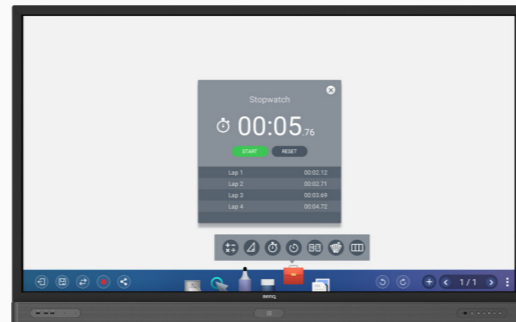
 Tool Box



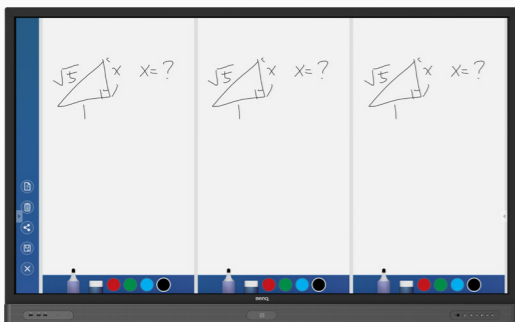
**Calculator**  
Ideal for assisting with the teaching of subjects involving complex calculation. Teachers can write out the complete formula in class while ensuring the accuracy of answers through the calculator's computerized calculation.



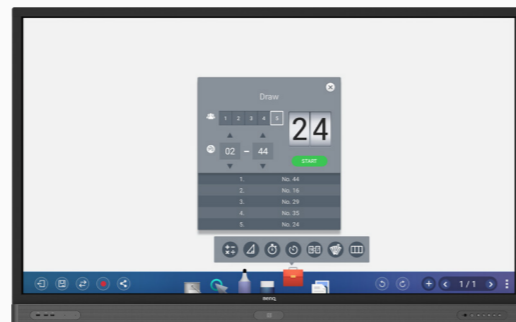
**Geometry**  
Capable of turning any roughly drawn triangle or rectangle into perfectly proportioned shapes.



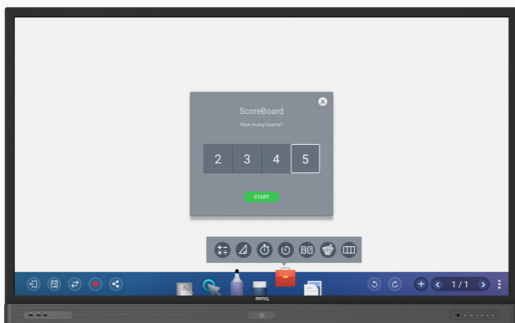
**Timer & Stopwatch**  
Perfect for timed team competitions and other group activities



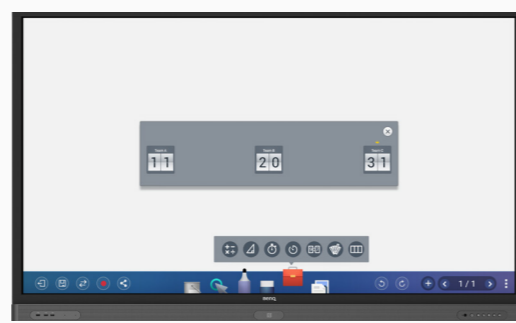
**Team Post**  
Useful for class discussion that allows up to 3 teams to participate in the discussion simultaneously.



**Draw Lots**  
Capable of selecting students to answer questions or participate in activities.



**Score Board**  
A convenient and reliable tool for tallying game scores right on the screen.



**Buzzer**  
Able to host game show style quizzes with EZWrite 4.0's interactive buzzer.



 **Wireless Solution for Seamless Collaboration**

InstaQShare is the software designed for seamless wireless presentation and collaboration during lectures. It allows the smooth streaming of visual, audio files and Full HD quality videos. Users can also mirror content from mobile devices, and invite up to 16 participants for seamless collaboration.

 **20-Point Multi-Touch Interactivity**



As the leading pioneer on the market, the RP Series supports multi-touch capability up to 20 points, allowing more students to participate in discussion and highly engaging activities at once.

\*Available in RP654K/ RP704K/ RP750K/ RP860K

# Facilitate Teaching Flow with Friendly Design

## Integrated Front-Facing Speaker and Pen Tray

The RP Series integrates the repositioned audio speakers with the screen-length pen tray. The two front-facing, 16W speakers create better sound transmission and bring more audiovisual enjoyment to interactive learning. The pen tray offers a handy place to keep IFP stylus and other tools that help enrich and smoothen presentations, providing fast access and avoiding needless interruption.



## Smart Account Management System (Smart AMS)

BenQ's IFPs support multi-account management through NFC technology, which allows users to directly access their personal system-setting and folders by simply scanning ID cards with the built-in sensor, as well as easily lock screens when not in use. Smart AMS also offers instant access to major cloud storage services without having to enter password.

\*Available in 2017 Q4

## NFCPen

The NFC sensor is located at the lower bezel of the RP Series. With a simple tap of the NFCPen, you can instantly activate the EZWrite 4.0 annotation app, and begin to annotate with different colors. NFCPen is a lightweight, NFC-enabled stylus specially designed to make annotating with EZWrite 4.0 an ultra-simple experience.

## Thoughtful Design and Exceptional Durability

NFCPen costs nearly nothing to maintain. Built with NFC technology, NFCPen is battery-free and doesn't require device pairing. Made of reliable materials, it is waterproof and designed to withstand long-term use.



## Front Buttons

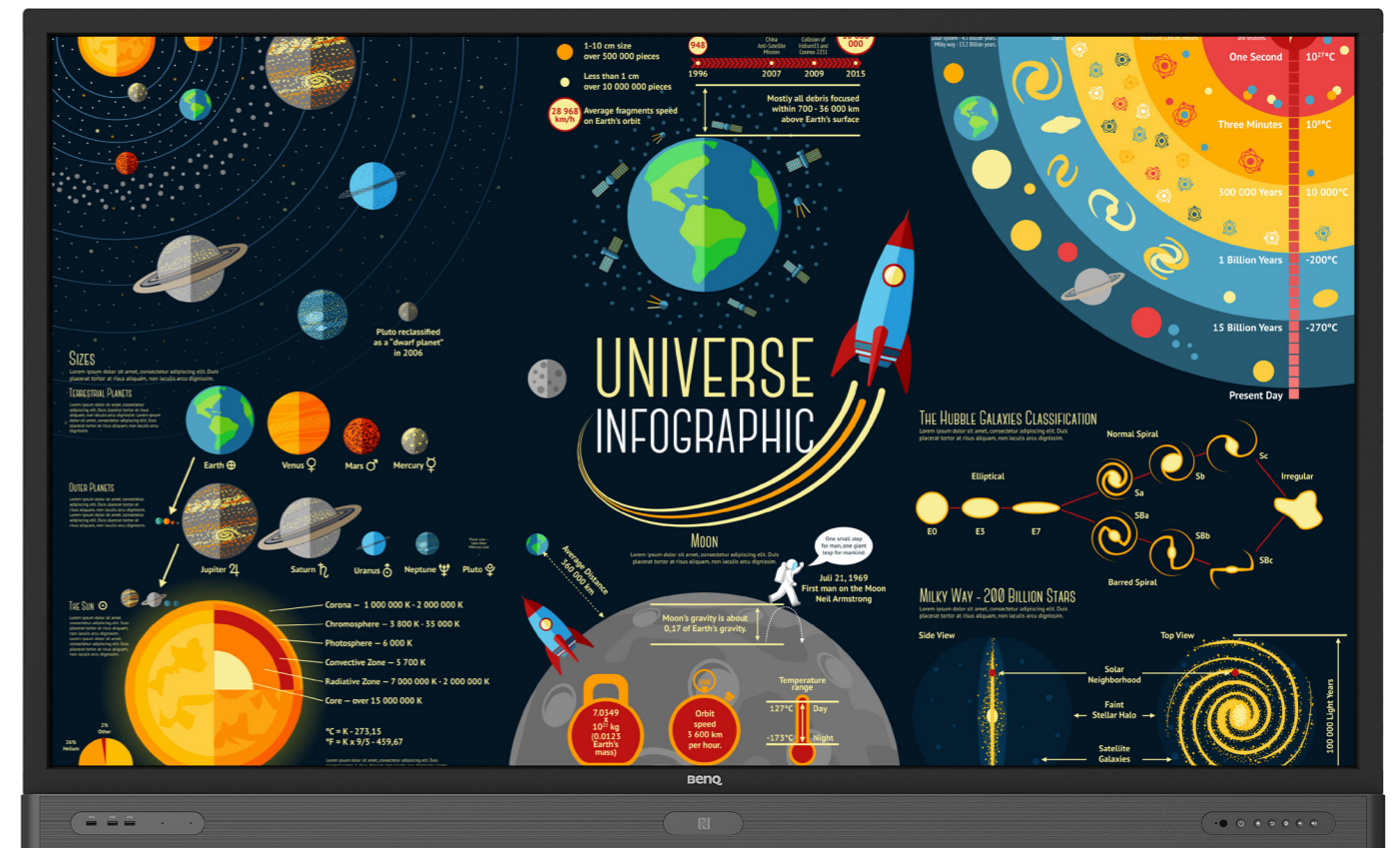
The front buttons, including Power, Home, Back, Setting, and Volume, further enhance the convenience of using IFPs and help teachers easily control the pace of lectures.

## Instant Plug and Play

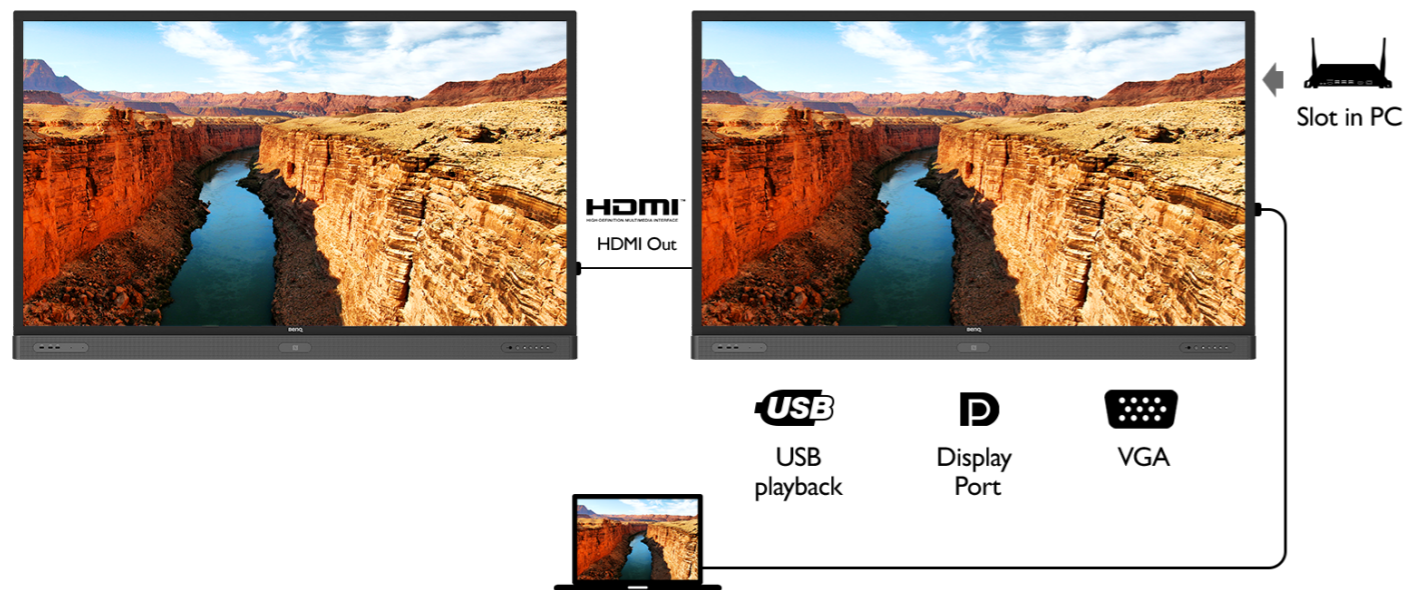
BenQ RP Series can save you from the hassles of complicated setup. Simply connect to a PC via USB and you're all set to deliver compelling IFP touch-enhanced lessons.

## Parental Control

BenQ IFPs come with website control feature that blocks certain websites by configuring proxy server settings, which is useful for preventing students from accessing inappropriate content.



# Maximize Flexibility in Teaching through Open Sharing



## Multiple Multimedia Device Connectivity

The RP Series offers multiple ports, including 6 USB ports, slot-in-PC port, HDMI 2.0 and an HDMI out for enhanced performance and screen extension. Additionally, the repositioned side IO ports make plugging cables more convenient while avoiding any visual distraction.



## Multi-Platform Compatibility

The Interactive Flat Panels can work seamlessly with a wide range of computing and mobile devices running most major operating systems, from Windows to Mac, Linux and Chrome, through its plug-and-play feature.

## Recommended Apps via “BenQ Suggest”

The RP series incorporates several recommended Android apps into BenQ Suggest, which further expand the IFPs' potential by simplifying app updates and downloading in the future.

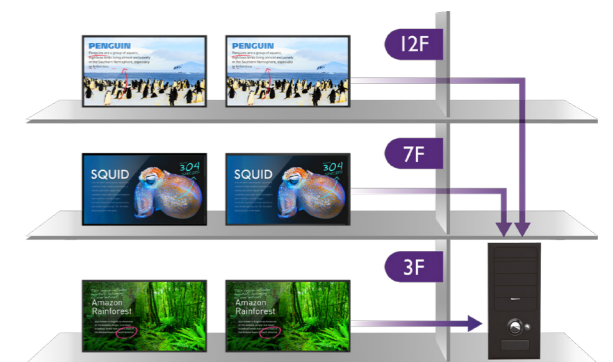


# Display Management Support

BenQ RP Series is installed with display management software, providing one-step tools to easily manage and set up Interactive Flat Panels with minimal cost and effort.

## Multiple Display Administrator (MDA)

Multiple Display Administrator (MDA) allows school IT to remotely control the general display settings of IFPs and schedule their on/off times, which helps to create hassle-free maintenance.



## EasySetting

Install Android™ apps for a selection of displays through the BenQ cloud server. EasySetting can save you from repetitive manual installation.



## Over-the-Air Update (OTA)

Upgrade your displays with the latest BenQ firmware via BenQ's OTA update support to keep them running smoothly at all times.



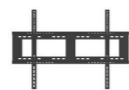
Model Name		RP553K	RP653K	RP654K	RP704K	RP750K	RP860K
<b>Panel</b>	Screen Size	55"	65"	65"	70"	75"	86"
	Backlight / Lightsource	DLED	DLED	DLED	DLED	DLED	DLED
	Resolution (Pixels)	UHD 3840x 2160 pixels	UHD 3840x 2160 pixels	UHD 3840x 2160 pixels	UHD 3840x 2160 pixels	UHD 3840x 2160 pixels	UHD 3840x 2160 pixels
	Brightness (Typical)	350 nits	450 nits	350 nits	330 nits	330 nits	330 nits
	Contrast Ratio (Typical)	1,200:1	1,200:1	1,200:1	4,000:1	1,200:1	1,200:1
	Viewing Angle (Horizontal/Vertical)	178°/178°	178°/178°	178°/178°	178°/178°	178°/178°	178°/178°
	Response Time (ms)	6ms	6ms	8ms	8ms	8ms	8ms
	Color Gamut (x% NTSC)	65%	65%	72%	72%	72%	72%
	Panel Bit (8 or 10)	10 bit	10 bit	10 bit	10 bit	10 bit	10 bit
Light Life (Typical)	30,000 hours	30,000 hours	30,000 hours	30,000 hours	30,000 hours	30,000 hours	
Display Orientation	Landscape	Landscape	Landscape	Landscape	Landscape	Landscape	
<b>Glass</b>	Tempered Glass	4mm, Tempered Glass	4mm, Tempered Glass	4mm, Tempered Glass	4mm, Tempered Glass	4mm, Tempered Glass	4mm, Tempered Glass
	Anti-Glare (AG) Coating	Yes	Yes	Yes	Yes	Yes	Yes
	Germ-Resistant Screen	N/A	N/A	Yes	Yes	Yes	Yes
<b>Touch</b>	Touch Technology	IR Touch	IR Touch	IR Touch	IR Touch	IR Touch	IR Touch
	Numbers of Touch	Up to 10 Point Multi-touch	Up to 10 Point Multi-touch	Up to 20 Point Multi-touch	Up to 20 Point Multi-touch	Up to 20 Point Multi-touch	Up to 20 Point Multi-touch
	Resolution (Points Area Function)	32,767*32,767	32,767*32,767	32,767*32,767	32,767*32,767	32,767*32,767	32,767*32,767
	Touch Interface	x4 (USB type B)	x4 (USB type B)	x2 (USB type B)	x2 (USB type B)	x2 (USB type B)	x2 (USB type B)
	OS Supported	Windows 7 /8 /10 /WinCE /Vista /Linux /Mac /Android /Chrome			Windows XP /7 /8 /10 /WinCE /Vista /Linux /Mac /Android /Chrome		
<b>Audio</b>	Internal Speaker	20Wx2	20Wx2	16Wx2	16Wx2	16Wx2	16Wx2
	Line Out (Audio Out, 3.5mm)	x1	x1	x1	x1	x1	x1
	Line In (3.5mm)	N/A	N/A	x1	x1	x1	x1
	MIC (3.5mm)	x1	x1	N/A	N/A	N/A	N/A
	Coax Output	N/A	N/A	x1	x1	x1	x1
<b>Connectivity</b>	AC Power						
	Power (AC) Input	x1	x1	x1	x1	x1	x1
	Power Switch	x1	x1	x1	x1	x1	x1
	Basic IO						
	VGA Input	x1	x1	x1	x1	x1	x1
	VGA Output	N/A	N/A	N/A	N/A	N/A	N/A
	HDMI Input	x4 (2.0x1, 1.4x3)	x4 (2.0x1, 1.4x3)	x3 (2.0x1, 1.4x2)	x3 (2.0x1, 1.4x2)	x3 (2.0x1, 1.4x2)	x3 (2.0x1, 1.4x2)
	HDMI Output	x1	x1	x1	x1	x1	x1
	Display Port	N/A	N/A	x1	x1	x1	x1
	Slot-in-PC	N/A	N/A	x1	x1	x1	x1
	OPS Slot	x1	x1	N/A	N/A	N/A	N/A
	Legacy IO						
	Composite Video In	N/A	N/A	x1	x1	x1	x1
USB Player (Photo, Video)	x4 (2.0x3, 3.0x1)	x4 (2.0x3, 3.0x1)	x6 (2.0x5, 3.0x1)	x6 (2.0x5, 3.0x1)	x6 (2.0x5, 3.0x1)	x6 (2.0x5, 3.0x1)	
USB Port (USB Extender)	N/A	N/A	N/A	N/A	N/A	N/A	
<b>Control</b>	RS232 Input	x1	x1	x1	x1	x1	x1
	RJ45 Port	x1	x1	x1	x1	x1	x1
	Firmware Update	USB/OTA	USB/OTA	USB/OTA	USB/OTA	USB/OTA	USB/OTA
<b>Power</b>	Voltage	100V-240V, 50/60Hz	100V-240V, 50/60Hz	100V-240V, 50/60Hz	100V-240V, 50/60Hz	100V-240V, 50/60Hz	100V-240V, 50/60Hz
	Typical (Watt)	170W	200W	210W	245W	315W	371W
<b>Mechanical</b>	Weight (Without / With Packing) (kg)	44kg/53kg	56kg/69kg	49kg/61kg	58kg/71kg	64kg/80kg	81kg/108kg
	Dimension (WxHxD) (mm)	1292*833*110mm	1,511x957x150mm	1,521x967x128mm	1,638x1034x128mm	1,762x1086x130mm	1,988x1230x129mm
	Wall Mounting (VESA) (mm)	4 holes (300x300mm) , Screw M6x 25mm	4 holes (400x400mm) , Screw M8x 25mm	4 holes (600x400mm) , Screw M8x 25mm	4 holes (600x400mm) , Screw M8x 25mm	4 holes (800x400mm) , Screw M8x 25mm	4 holes (800x400mm) , Screw M8x 25mm
	Handle	N/A	x2	x2	x2	x2	x2
<b>RF</b>	Pen Tray	x1	x1	x1	x1	x1	x1
	NFC Reader / Writer	N/A	N/A	x1	x1	x1	x1
<b>OSD</b>	On-Screen Display Languages	English/ French/ Spanish/ Portuguese/ Simplified Chinese/ Traditional Chinese/ German/ Dutch/ Polish/ Russian/ Czech/ Danish/ Swedish/ Italian/ Romanian/ Finnish/ Norwegian/ Greek/ Turkish/ Arabic/ Japanese (21 Languages)					
<b>Package / Accessory</b>	Remote Controller	x1	x1	x1	x1	x1	x1
	Power Cord (By Region)	x4 (1.8m)	x4 (1.8m)	x4 (1.8m)	x4 (1.8m)	x4 (1.8m)	x4 (1.8m)
	Audio Cable	N/A	N/A	x 1 (5m)	x 1 (5m)	x 1 (5m)	x 1 (5m)
	VGA Cable	x 1 (1.5m)	x 1 (1.5m)	x 1 (5m)	x 1 (5m)	x 1 (5m)	x 1 (5m)
	HDMI Cable	x 1 (1.5m)	x 1 (1.5m)	N/A	N/A	N/A	N/A
	Quick Start Guide	x1	x1	x1	x1	x1	x1
	User's Manual Electronic File	x1	x1	x1	x1	x1	x1
	USB Cable for Touch	x 1 (3m)	x 1 (3m)	x 1 (10m)	x 1 (10m)	x 1 (10m)	x 1 (10m)
	Touch Pen (Stylus)	x2	x2	x2 (NFC)	x2 (NFC)	x2 (NFC)	x2 (NFC)
Software License Card	x1	x1	x1	x1	x1	x1	
<b>Optional</b>	Wall Mount	Yes	Yes	Yes	Yes	Yes	Yes
	QCast HDMI Streaming Dongle	Yes	Yes	Yes	Yes	Yes	Yes
	USB Wi-Fi Dongle	N/A	N/A	Yes	Yes	Yes	Yes
	Slot-in-PC	N/A	N/A	Yes	Yes	Yes	Yes
	Trolley	Yes	Yes	Yes	Yes	Yes	Yes

## Accessories



### Trolley

RP553K/ RP653K/ RP654K/  
RP704K/ RP750K/ RP860K



### Wall mount

RP553K/ RP653K/ RP654K/  
RP704K/ RP750K/ RP860K



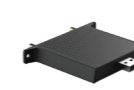
### Touch pen

RP553K/ RP653K



### NFC Pen

RP654K/ RP704K/ RP750K/  
RP860K



### USB Wi-Fi Dongle

RP654K/ RP704K/ RP750K/  
RP860K



### QCast

RP654K/ RP704K/ RP750K/  
RP860K



### Slot-in-PC

RP654K/ RP704K/ RP750K/  
RP860K